

# UV-IPC815SB-ADF14K-IO

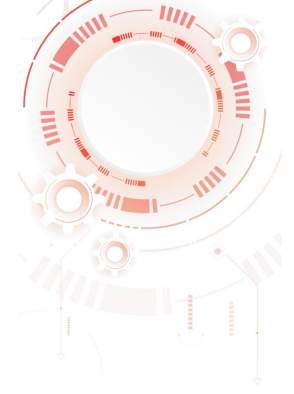
## Uniview Prime



- Uniview
- IP camera
- Prime range
- 1/2.8" Progressive Scan CMOS
- 5 Megapixel (2592×1944)
- Lens 1.4 mm Fisheye
- 0 Lux
- IR Range 10 m
- Compression Ultra265/H.265/H.264
- RJ-45 10/100 BaseT
- 2x Integrated microphone
- Alarm
- PoE IEEE802.3af
- Weatherproof IP66
- Vandal proof IK10
- IR Cut
- WDR (120 dB)
- SD card recording
- WEB, CMS, Smartphone and NVR interface
- ONVIF Compatible

## Features

- 5 MP fisheye IP camera
- Prime range
- 1/2.8" Progressive Scan CMOS
- 1.4 mm Fisheye lens 360° | WDR
- IR LEDs Range 10 m | Audio and Alarms
- WEB, CMS, Smartphone and NVR interface



## Specs

<b>Brand</b>	Uniview
<b>Range</b>	Prime
<b>Image sensor</b>	1/2.8" Progressive Scan CMOS
<b>Maximum resolution</b>	5 Megapixel (2592×1944)
<b>Main Stream rate</b>	5Mpx (1 ~ 30 FPS)
<b>Extra Stream rate</b>	2 <sup>o</sup> :1080p (1 ~ 30 FPS), 3 <sup>o</sup> :D1 (1 ~ 30 FPS)
<b>Compression</b>	Ultra265/H.265/H.264
<b>Lens</b>	Lens 1.4 mm Fisheye 360 <sup>o</sup>
<b>Minimum illumination</b>	0.01 Lux (Colour)
<b>Infrared range</b>	10 m
<b>Image improvements</b>	WDR (120dB), BLC, HLC, AGC, 2D/3D-NR, Motion detection, ROI, Privacy Mask, Smart IR
<b>Day / Night</b>	Mechanical ICR filter
<b>Internal memory</b>	MicroSD card, Max 256 GB
<b>Alarms</b>	1 input / 1 relay
<b>Audio</b>	2x Integrated microphone
<b>Network interface</b>	Ethernet 10/100 BaseT
<b>Remote access</b>	Web Browser, CMS Software (EZStation), Smartphone (EZView/EZLive)
<b>Interoperability</b>	ONVIF
<b>Power</b>	DC 12 V / 8.5 W, PoE IEEE802.3af
<b>Protection</b>	IP66, IK10
<b>Temp. operation</b>	-40 <sup>o</sup> C ~ 60 <sup>o</sup> C
<b>Degree of protection</b>	Weatherproof IP66, Anti-vandal IK10
<b>Dimensions</b>	44 mm (D) x 125 (Ø) mm
<b>Weight</b>	360 g

## Package content

- Uniview IP Camera
- Installation material
- User instructions