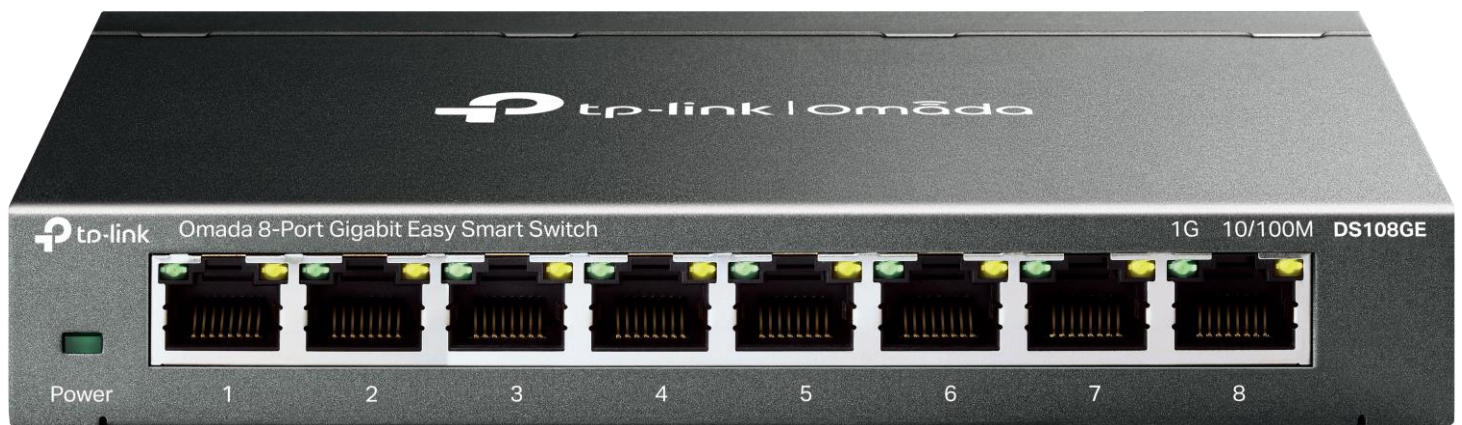


# Omada Unmanaged Switch | Datasheet

DS108GE

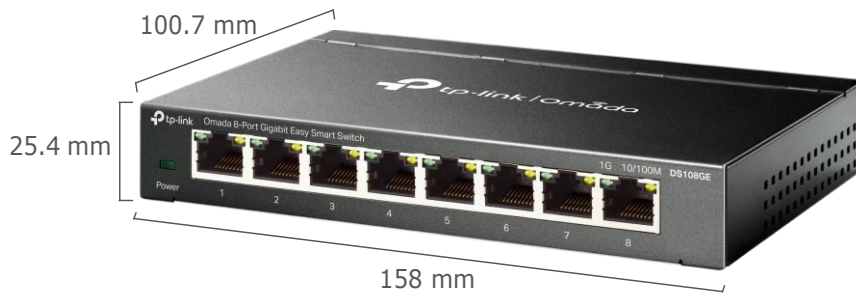
Omada 8-Port Gigabit Easy Smart Switch



## Highlights

- 8× 10/100/1000Mbps RJ45 ports
- Plug and play, no configuration required
- Durable metal casing of superior quality and professional appearance
- Intelligent management via a web user interface and downloadable utility
- Green technology reduces power consumption

# Product Pictures



8 × Gigabit RJ45 Ports

# Specifications

## Hardware Features & Performance

Model		DS108GE
General	Standards	IEEE 802.3, IEEE 802.3i, IEEE 802.3u, IEEE 802.3ab, IEEE 802.3x, IEEE 802.1q, IEEE 802.1p
	Interfaces	<ul style="list-style-type: none"> <li>• 8 10/100/1000Mbps RJ45 Ports</li> <li>• AUTO Negotiation/AUTO MDI/MDIX</li> </ul>
Performance	Forwarding Method	Store-and-Forward
	Switching Capacity	16 Gbps
	Forwarding Rate	11.9 Mpps
	MAC Address Table	4K
	Packet Buffer Memory	1.5 Mbit
	Jumbo Frame	16 KB
Physical & Environment	Power Supply	External Power Adapter (5 V/0.6 A)
	Network Media	<ul style="list-style-type: none"> <li>• 10BASE-T: UTP category 3, 4, 5 cable (maximum 100m)</li> <li>• 100BASE-TX: UTP category 5 or above cable (maximum 100m)</li> <li>• 1000BASE-T: UTP category 5e or above cable (maximum 100m)</li> </ul>
	Maximum Power Consumption	4.26 W
	Maximum Heat Dissipation	14.84 BTU/h
	Dimensions (W×D×H)	6.2*4.0*1.0 in. (158*100.7*25.4 mm)

## Hardware Features & Performance

Physical & Environment	Fan Quantity	Fanless
	Installation	Desktop/Wall Mounting
	Operating Temperature	0°C~40°C (32°F~104°F)
	Storage Temperature	-40 °C~70 °C (-40 °F~158 °F)
	Operating Humidity	10%~90%RH, non-condensing
	Storage Humidity	5%~90%RH, non-condensing
	Certification	CE, FCC, RoHS

## Software Features

Model	DS108GE
L2 Features	• IGMP Snooping
	• Static Link Aggregation
	• Port Mirroring
	• Cable Diagnostics
	• Loop Prevention
VLAN	• 32 VLANs (out of 4K VLAN IDs)
	• MTU/Port-Based/802.1Q VLAN
QoS	• 4 Priority Queues
	• Port-Based/802.1p/DSCP QoS
	• Bandwidth Control
	• Storm Control
Management	• Web-Based Graphic User Interface (GUI)
	• Easy Smart Configuration Utility