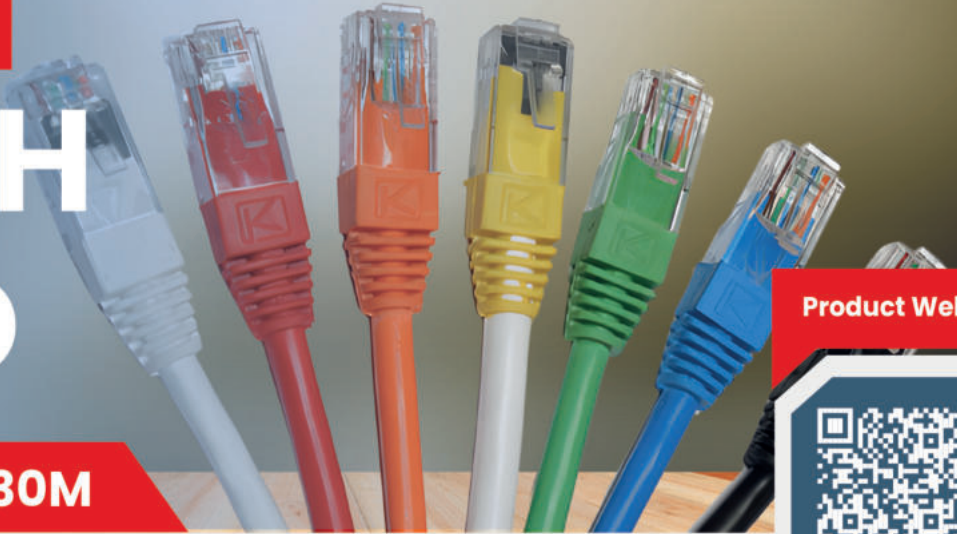


# COPPER PATCH CORD



Product Web Page



## NS-106UTP-RE-0.30M

THE COPPER PATCH CABLE, PATCH CORD OR PATCH LEAD IS AN ELECTRICAL USED TO CONNECT (PATCH IN) ONE ELECTRONIC TO ANOTHER FOR SIGNAL ROUTING . DEVICES OF DIFFERENT TYPES (A SWITCH CONNECTED TO A COMPUTER, OR A SWITCH TO A ROUTER) ARE CONNECTED WITH PATCH CORDS

## PATCH CORD CAT6 UTP LSZH 0.30M

RED

### DESCRIPTION

Patch Cord Cat6 UTP 550Mhz 24AWG 50um  
Gold Platted Contacts 0.30M Iszh Red Jacket

### FEATURES

Guaranteed performance Tested UP TO 550MMhz.  
The particular saw-tooth design of jacket towards inner can enhance the resistance of alien crosstalk.  
The unique design of PE cross reduces the NEXT, RL and provides better transmission.  
Connector: 8P8C, RJ45, 50 um gold plating.  
Flame Retardant is verified according to IEC 60332-1-2.  
Stable transmission, Higher efficiency.  
High bandwidth, Lower latency.

### KEY FEATURES OF LSZH

Flame Retardancy.  
Low Smoke Emission.  
Halogen-Free Composition

### APPROVAL

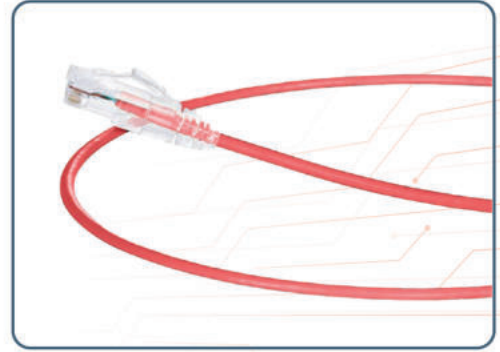
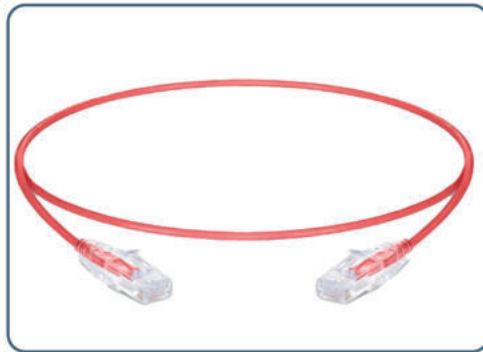
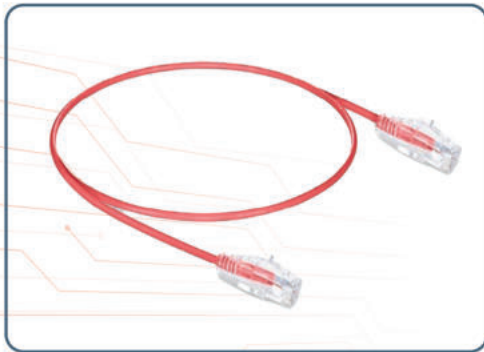
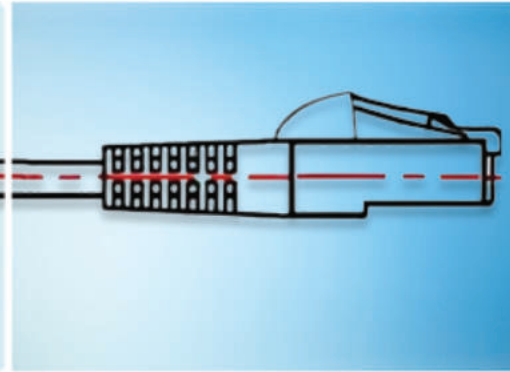
UL/cUL Listed.  
ETL/3P Certified Category  
6 Channel Testing  
Performance Requirements.



### APPLICATIONS

10GBASE-T Ethernet.  
1000BASE-TX/1000BASE-T Gigabit Ethernet.  
100BASE-TX Fast Ethernet.  
10BASE-TX Ethernet.  
Used in LAN networks and Telephone connections.  
Used in connecting printers and modems to computer.  
Used in Ethernet connections from the slow speed to high-speed data transfers

# TECHNICAL SPECIFICATION



Part Number	Description
NS-106UTP-XX-0.30M	Cat 6 UTP Patch Cord 0.30M with 6 Colors (White, Gray, Red, Black, Yellow, Blue)
NS-106UTP-XX-0.50M	Cat 6 UTP Patch Cord 0.50M with 6 Colors (White, Gray, Red, Black, Yellow, Blue)
NS-106UTP-XX-1M	Cat 6 UTP Patch Cord 1M with 6 Colors (White, Gray, Red, Black, Yellow, Blue)
NS-106UTP-GR-2M	Cat 6 UTP Patch Cord 2M Gray
NS-106UTP-XX-3M	Cat 6 UTP Patch Cord 3M with 6 Colors (White, Gray, Red, Black, Yellow, Blue)
NS-106UTP-GR-5M	Cat 6 UTP Patch Cord 5M Gray
NS-106UTP-GR-10M	Cat 6 UTP Patch Cord 10M Gray
NS-106UTP-GR-15M	Cat 6 UTP Patch Cord 15M Gray
NS-106UTP-GR-20M	Cat 6 UTP Patch Cord 20M Gray
NS-106UTP-GR-25M	Cat 6 UTP Patch Cord 25M Gray

Use (XX) to specify color: WH= White, GR=Gray, RD=Red, BL=Black, YL=Yellow, BU=Blue