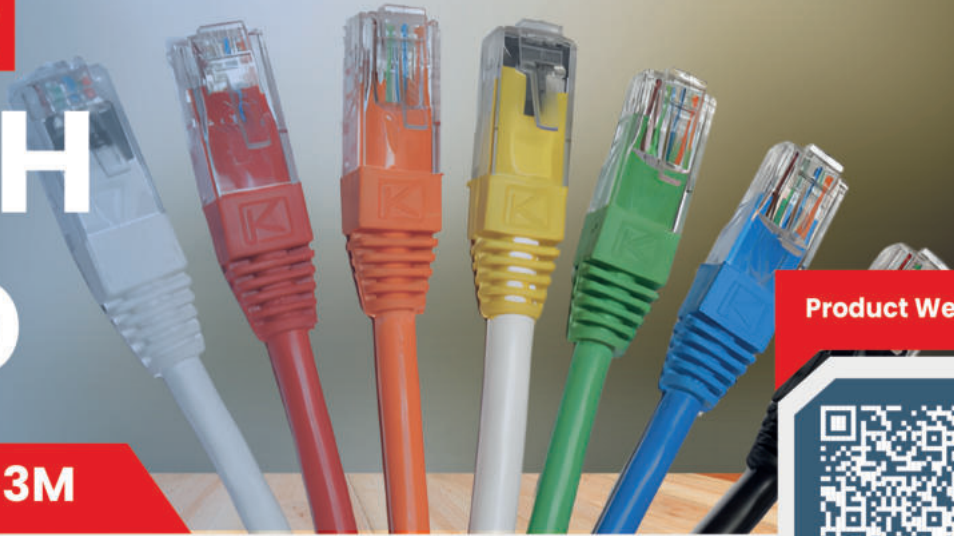


COPPER PATCH CORD



Product Web Page



NS-106AUTP-GR-3M

THE COPPER PATCH CABLE, PATCH CORD OR PATCH LEAD IS AN ELECTRICAL USED TO CONNECT (PATCH IN) ONE ELECTRONIC TO ANOTHER FOR SIGNAL ROUTING . DEVICES OF DIFFERENT TYPES (A SWITCH CONNECTED TO A COMPUTER, OR A SWITCH TO A ROUTER) ARE CONNECTED WITH PATCH CORDS

PATCH CORD CAT6A UTP LSZH 3M

GRAY

DESCRIPTION

Patch Cord Cat6A UTP 550Mhz 24AWG 50um
Gold Platted Contacts 3M Lszh Gray Jacket

FEATURES

Guaranteed performance Tested UP TO 550MMhz.
The particular saw-tooth design of jacket towards inner can enhance the resistance of alien crosstalk.
The unique design of PE cross reduces the NEXT, RL and provides better transmission.
Connector: 8P8C, RJ45, 50 um gold plating.
Flame Retardant is verified according to IEC 60332-1-2.
Stable transmission, Higher efficiency.
High bandwidth, Lower latency

KEY FEATURES OF LSZH

Flame Retardancy.
Low Smoke Emission.
Halogen-Free Composition

APPROVAL

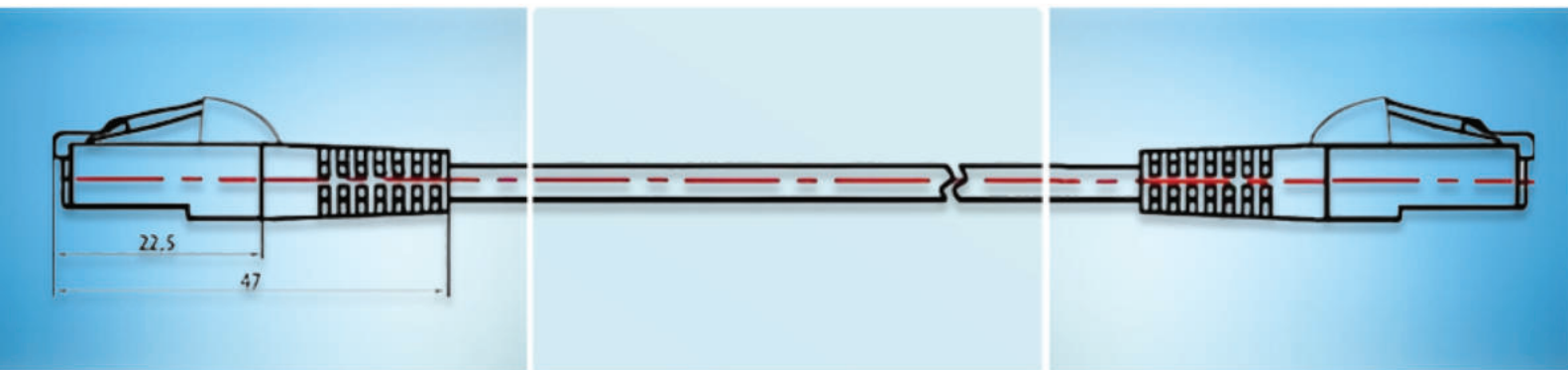
UL/cUL Listed.
RoHS complaint



APPLICATIONS

10GBASE-T Ethernet.
1000BASE-TX/1000BASE-T Gigabit Ethernet.
100BASE-TX Fast Ethernet.
10BASE-TX Ethernet.
155 Mbit/1.2 Gbit ATM.
IP video, Broadband video.
future Cat 6A and Class EA applications.
Used in LAN networks, Telephone connections.
Used in connecting printers and modems to computer

TECHNICAL SPECIFICATION



Part Number	Description
NS-106AUTP-GR-0.30M	Patch Cord CAT6A UTP LSZH 0.30M Gray
NS-106AUTP-GR-0.50M	Patch Cord CAT6A UTP LSZH 0.50M Gray
NS-106AUTP-GR-1M	Patch Cord CAT6A UTP LSZH 1M Gray
NS-106AUTP-GR-3M	Patch Cord CAT6A UTP LSZH 3M Gray
NS-106AUTP-GR-5M	Patch Cord CAT6A UTP LSZH 5M Gray