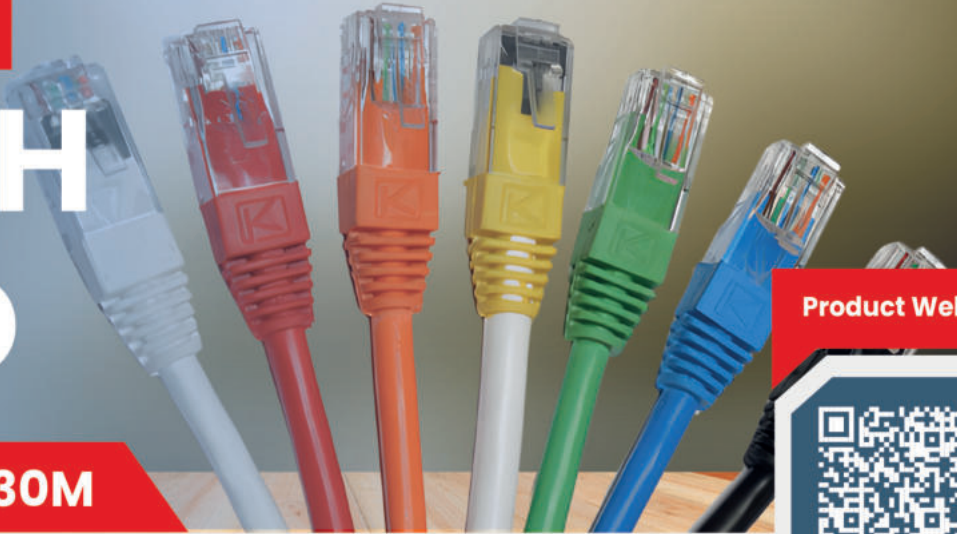


COPPER PATCH CORD



Product Web Page



NS-106UTP-BU-0.30M

THE COPPER PATCH CABLE, PATCH CORD OR PATCH LEAD IS AN ELECTRICAL USED TO CONNECT (PATCH IN) ONE ELECTRONIC TO ANOTHER FOR SIGNAL ROUTING . DEVICES OF DIFFERENT TYPES (A SWITCH CONNECTED TO A COMPUTER, OR A SWITCH TO A ROUTER) ARE CONNECTED WITH PATCH CORDS

PATCH CORD CAT6 UTP LSZH 0.30M

BLACK

DESCRIPTION

Patch Cord Cat6 UTP 550Mhz 24AWG 50um
Gold Platted Contacts 0.30M Iszh Blue Jacket

FEATURES

Guaranteed performance Tested UP TO 550MMhz.
The particular saw-tooth design of jacket towards inner can enhance the resistance of alien crosstalk.
The unique design of PE cross reduces the NEXT, RL and provides better transmission.
Connector: 8P8C, RJ45, 50 um gold plating.
Flame Retardant is verified according to IEC 60332-1-2.
Stable transmission, Higher efficiency.
High bandwidth, Lower latency

KEY FEATURES OF LSZH

Flame Retardancy.
Low Smoke Emission.
Halogen-Free Composition

APPROVAL

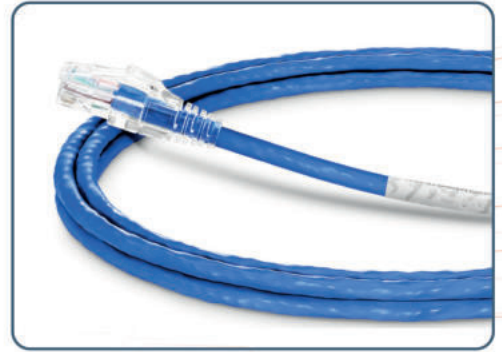
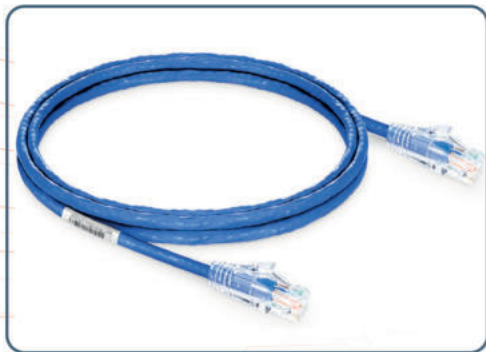
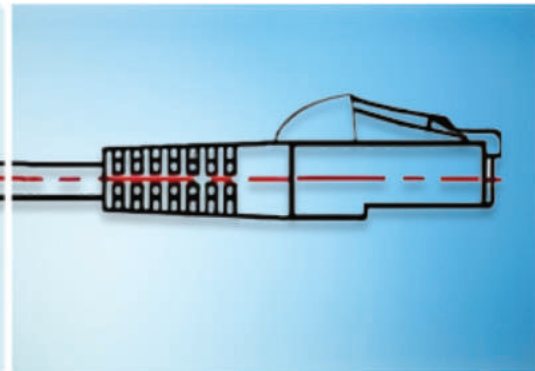
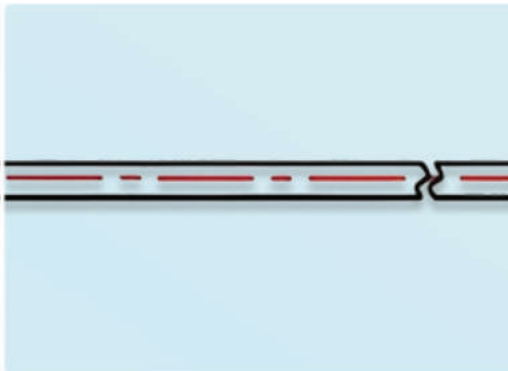
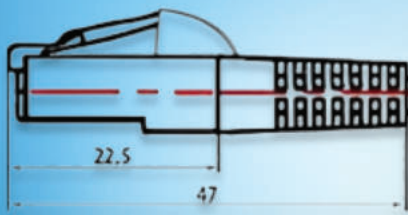
UL/cUL Listed.
ETL/3P Certified Category
6 Channel Testing
Performance Requirements



APPLICATIONS

10GBASE-T Ethernet.
1000BASE-TX/1000BASE-T Gigabit Ethernet.
100BASE-TX Fast Ethernet.
10BASE-TX Ethernet.
Used in LAN networks and Telephone connections.
Used in connecting printers and modems to computer.
Used in Ethernet connections from the slow speed to high-speed data transfers

TECHNICAL SPECIFICATION



Part Number	Description
NS-106UTP-XX-0.30M	Cat 6 UTP Patch Cord 0.30M with 6 Colors (White, Gray, Red, Black, Yellow, Blue)
NS-106UTP-XX-0.50M	Cat 6 UTP Patch Cord 0.50M with 6 Colors (White, Gray, Red, Black, Yellow, Blue)
NS-106UTP-XX-1M	Cat 6 UTP Patch Cord 1M with 6 Colors (White, Gray, Red, Black, Yellow, Blue)
NS-106UTP-GR-2M	Cat 6 UTP Patch Cord 2M Gray
NS-106UTP-XX-3M	Cat 6 UTP Patch Cord 3M with 6 Colors (White, Gray, Red, Black, Yellow, Blue)
NS-106UTP-GR-5M	Cat 6 UTP Patch Cord 5M Gray
NS-106UTP-GR-10M	Cat 6 UTP Patch Cord 10M Gray
NS-106UTP-GR-15M	Cat 6 UTP Patch Cord 15M Gray
NS-106UTP-GR-20M	Cat 6 UTP Patch Cord 20M Gray
NS-106UTP-GR-25M	Cat 6 UTP Patch Cord 25M Gray

Use (XX) to specify color: WH= White, GR=Gray, RD=Red, BL=Black, YL=Yellow, BU=Blue